

Please register for these 2010 niche pork sessions by sending an email to [dstender@iastate.edu](mailto:dstender@iastate.edu).

Enrollment may be limited. Registration is free; you only pay for the long distance phone call.

The workshops will use telephone conference call technology for the audio portion, with visual access to the materials available with internet access or by downloading the presentations ahead of time. High speed internet access and a separate phone line are highly recommended.

If you do not have high speed internet access and a separate phone line, or if you only have one phone line, you will have to download the presentation ahead of the session and advance the slides manually while on the teleconference. The other option is to access the sessions at a local Extension Office.

Email Dave Stender to get more instructions about participating.

Questions? Contact Dave Stender at 712-225-6196 (office) or 712-261-0225 (cell) or at [dstender@iastate.edu](mailto:dstender@iastate.edu)



## Sponsors:



Iowa Pork  
Industry Center

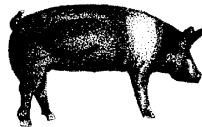
IOWA STATE UNIVERSITY  
University Extension



**IOWA PORK**  
PRODUCERS ASSOCIATION



Practical Farmers of  
Iowa



Pork Niche Market  
Working Group

### Meeting Website:

<http://connect.extension.iastate.edu/niche>

### Meeting Conference Call Number:

1-517-417-5000, access code 194656

Iowa State University Cooperative Extension educational programs abide with the non-discrimination policies of the Iowa State University and the United States Department of Agriculture

## 2010 Virtual Niche Pork Farm Tours & Niche Pork Discussion Coming Your Way



**Participate at home at your  
computer or at your local  
Extension Office**

**Noon to 1:30 pm**

**Wed., Feb. 3<sup>rd</sup> & Wed., Feb. 10<sup>th</sup>  
Scott Sibbel Farm Tour**

**Thurs., March 25<sup>th</sup>  
Niche Pork Management Discussion**

### Sponsors

Iowa State University Extension  
Iowa Pork Industry Center  
Practical Farmers of Iowa  
Iowa Pork Producer Association  
Pork Niche Market Working Group

## Why join these tours?

Participating will be a great way to conveniently connect with niche pork producers and see how they are managing their operation.

On the first two days, you will take a virtual tour of the Scott Sibbel operation. Scott's farm is near Carroll, Iowa, and you'll be able to see and discuss technologies, ideas, and strategies used in Scott's operation.

Emphasis will be placed on new and innovative techniques and ideas. There will also be opportunities to discuss operation-specific solutions to challenges, and a mini discussion topic will be addressed each week.

The third session will use records from actual niche pork farms to review and discuss key management topics that are important for successfully raising niche hogs.

Having the opportunity to interact with others who share your interests will be rewarding and educational.

## Do I need a computer with internet access plus a separate phone line?

No. Although accessing from home with high speed internet and a separate phone line is ideal, there are two options if you don't have this capacity.

1. Access the sessions at your local Extension Office (please contact us ahead of time for help in making arrangements).
2. Download the presentations from the internet ahead of time, and then run them on your computer while you call in on your phone.

## How do I hook up?

**Option 1:** If you have high speed internet access and a separate phone line, you will need to open

the following web page:

<http://connect.extension.iastate.edu/niche>

Then you will type in your name, enter the meeting room. You will also call the conference call number (517-417-5000, access code 194656) to join the discussion.

**Option 2:** Same as option one except at a local Extension Office.

Note: Please let us know if you need a local office hookup.

**Option 3:** Go online to download the presentations in advance to your computer, and then call the conference call number to join the discussion.

Note: option 3 will be slightly less interactive.

## Questions?

Dave Stender: 712-261-0225 or 712-225-6196 or [dstender@iastate.edu](mailto:dstender@iastate.edu)

Gary Huber: 515-450-6812 or [gary@practicalfarmers.org](mailto:gary@practicalfarmers.org).